

9.227
8.878
8.838
8.783

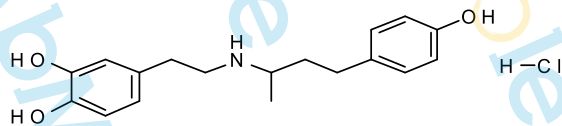
7.024
7.003
6.701
6.685
6.680
6.665
6.640
6.635
6.500
6.496
6.481
6.476

3.115
3.014
2.782
2.764
2.749
3.350
2.729
2.630
2.594
2.570
2.558
2.507
2.503
2.498
2.465
2.449
2.414
2.034
1.991
1.959
1.729
1.682
1.620
1.273
1.257
1.234
-0.001

Sample Name: Dobutamine hydrochloride-01

Chemical Formula: C₁₈H₂₄ClNO₃

Molecular Weight: 337.84



CAS: 49745-95-1

DM SO -d6, 400 MHz

1.00
2.17
1.96
2.04
3.06
1.05
1.00
2.20
1.07
2.12
1.03
1.15
1.12
1.04
3.10

10 8 6 4 2 0 PPM